



VoiceNavIt™ 2.0.0

Users Manual

Copyright ©2004-2006
VoiceIt Technologies, LLC.
All Rights Reserved.

www.voiceit-tech.com

Table of Contents

- 1. Introduction 2
- 2. System Requirements 2
 - 2.1 Compatibility 2
- 3. Installation..... 2
 - 3.1 Registering VoiceNavIt™ after purchase 3
 - 3.2 Resolving Registration Problems 5
- 4. Launching VoiceNavIt™ 6
- 5. User Interface 6
 - 5.1 Initial Setup..... 7
 - 5.2 Quick Start Guide..... 7
- 6. Settings 9
- 7. VoiceNavIt™ limitations 10
- 8. User License 10
- 9. Copyright..... 12
- 10. Disclaimer 12
- 11. Limitation of Liability..... 12
- 12. Technical Support..... 12

1. Introduction

VoiceNavIt™ is the first application for the PalmOS that allows quick and easy voice navigation of your Palm Powered™ Treo smartphone, LifeDrive™, or mobile manager. With the power of VoiceNavIt™ at your fingertips, you can launch your favorite application, simulate keystrokes, or execute an infinite variety of commands with just your Voice! Common tasks such as adding contacts, taking a picture, or checking your calendar are now just a few words away. With our state of the art solution, your time, energy, and device are utilized to the fullest potential, and needless keystrokes are deleted.

In addition, VoiceNavIt™ includes seven new predefined voice commands preprogrammed ready for your unique voice tag to automate your mobile lifestyle immediately. They are "New Appointment", "New Contact", "New Task", "Take Picture", "View Calendar", "View Contacts", and "View Tasks".

Whatever your device can do, VoiceNavIt™ can enable. Truly, your imagination is the only limitation, and VoiceNavIt™ makes it happen.

2. System Requirements

- PalmOS® device with 5.2 Extended Sound Support (voice recording) capability.
- 1500K of free memory.

2.1 Compatibility

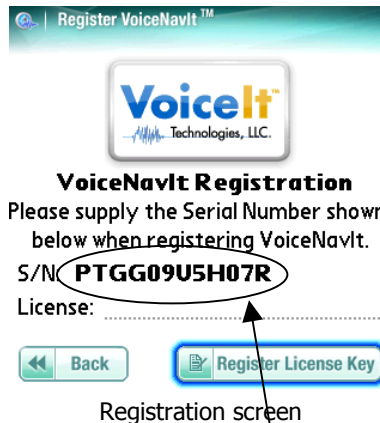
Will work with all PalmOS™ Powered devices running PalmOS™ 5.2 or higher with audio recording support. Some of the currently supported models: Palm Treo™ 700p, Treo™ 650, Treo™ 600 smartphones, PalmOne LifeDrive, and PalmOne T|X (with special adapter).

3. Installation

To install VoiceNavIt™ you will need to run the saved file called "VoiceNavIt20forPalmOS.exe" on you PC. Then follow screen instructions.

3.1 Registering VoiceNavIt™ after purchase

After installation is complete, launch VoiceNavIt by tapping on the VoiceNavIt icon. Press the Menu button on the phone and choose "Register VoiceNavIt" from the menu. You will see the following screen.

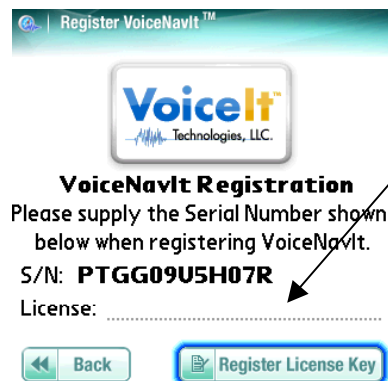


The serial number of your device is required for registration. In the example above, the serial number is circled. Carefully copy the **Serial Number (S/N)** from YOUR own screen. Note: there are no letter "O" characters in the serial number, only zeros. So in the example above, the 5th and 10th characters are both zeros. Now complete the following steps to register and create a License Key online.

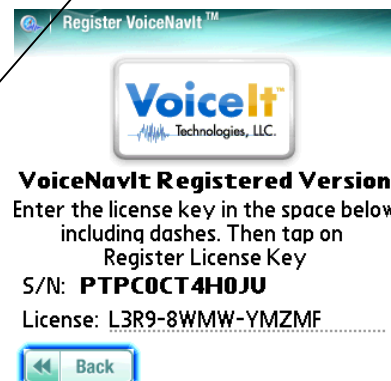
- Login at: <https://www.voiceit-tech.com/login.php>
- Use the password you received via email after purchasing to login.
- For best results, copy and paste the password into the login screen. Note: if your password contains lower-case letters login via computer, as your phone cannot generate lower-case letters. You may change the password after logging in.
- After logging in choose the "Generate License" option.
- Carefully enter your serial number in the space provided near the bottom of the form.
- Choose "VoiceNavIt 2.0" from the Application list.
- Click on the "Send License Key" button to complete registration. Your License Key will be displayed on screen. It will also be emailed to you.

3.1 Registering VoiceNavIt™ after purchase - continue

After you receive your License Key, access the Registration screen again. Tap on the VoiceNavIt icon, press the Menu button on the phone and choose "Register VoiceNavIt" from the menu. Now carefully enter the License Key into the space after "License". Be sure to include the dashes when typing. Tap on the **Register License Key** button to complete the registration process. Following acceptance of the registration key, the screen will change to indicate that VoiceNavIt is registered. You will only have to do this once unless you replace your phone or perform a hard reset.

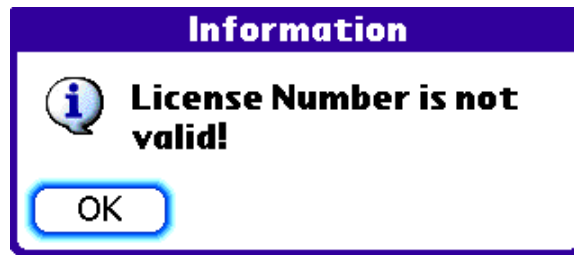


Entering the license key



Successful registration

3.2 Resolving Registration Problems



If the message above is displayed during registration, please try the suggestions below:

- Carefully re-enter the License Key, and be sure to include the dashes.
- Confirm that the serial number was copied correctly. Launch VoiceNavIt and choose "Register VoiceNavIt" from the menu to display the Registration screen. Carefully compare the serial number on the screen with the serial number on your License Key email. Make sure each character is correct; in the proper order and that you have the right number of characters. If you notice any differences, create a new license key as described in section 3.1. Be sure to enter the correct serial number in the space provided near the bottom of the form.
- If you have purchased other VoiceIt products or have an older version of VoiceNavIt check your License Key email to ensure that the Key was created for the appropriate product and version. If the Product is NOT VoiceNavIt 2.0.0 then create a new License Key as described in section 3.1. Be sure to choose the correct product/version from the Application list.
- If you still cannot register, contact our support team at: support.team@voiceit-tech.com and report the problem. Include in your email:
 - Product and Version Number
 - The correct serial number
 - Any invalid License Key(s) you generated

4. Launching VoiceNavIt™

To launch VoiceNavIt™, look for the icon  and tap on it.

VoiceNavIt

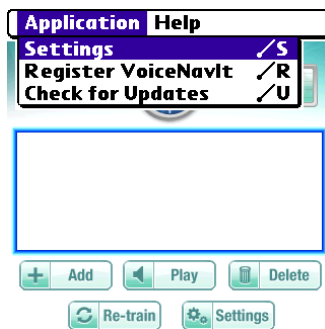
5. User Interface

The main screen of VoiceNavIt™ is where you can **Add, Del, Play,** and **Re-train** voice commands, plus set the **Settings**.

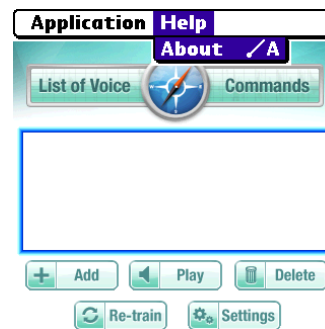


Main Screen

The main menu options allow you to access the **Settings, Register VoiceNavIt, Check for Updates,** and see the **About** screen. To access the menu press the Menu button on the phone or tap on the top part of the VoiceNavIt screen.



Application Options



Help Options

5.1 Initial Setup

Before using VoiceNavIt™ you must choose a Trigger button. The Trigger button is pressed to activate VoiceNavIt™ when you want say a voice command. Also you can decide whether the Trigger button will be active all the time or only when VoiceNavIt™ is running.

Step 1: Tap on the VoiceNavIt™ icon.

Step 2: Tap on the Settings button.

Step 3: Tap on the Next button.

Step 4: Make a selection for Trigger button and select (Volume Up for Treo, and Picture for LifeDrive). Choose a button that is not currently used for anything or that you do not use extensively.

Step 5: Choose Active or Inactive for QuickStart. "Active" means the Trigger button will activate VoiceNavIt™ at all times. This is the most powerful and useful option and we recommend using it. However the Trigger Button will no longer perform its original function. For example, if you chose Calendar as Trigger button, pressing the Calendar button will no longer open the Calendar; instead it will activate VoiceNavIt. "Inactive" means the Trigger button will activate VoiceNavIt™ only when VoiceNavIt™ is running.

Step 6: Tap on Save.

5.2 Quick Start Guide

In order to utilize VoiceNavIt™ you need to set the **Settings**, and **Add** voice commands. The following steps will show you how to setup and operate VoiceNavIt™.

Step 1: Tap on the VoiceNavIt™ icon.

Step 2: Tap on Settings button.

Step 3: Tap on Next button.

Step 4: Tap on Trigger button and select (Volume Up for Treo, and Picture for LifeDrive).

Step 5: Tap QuickStart and select Active.

Step 7: Tap on Save.

Step 8: Tap Add.

Step 9: Scroll and Select "Calc".

Step 10: Tap on Voice Command Name button.

Step 11: Enter "Calculator" into Voice Command Name input field.

Step 12: Make sure Mute switch is not on (Treo™). Then press Trigger button - Volume Up (Treo™) or Picture (LifeDrive™) button.

Step 13: Wait for the woman's voice.

Step 14: Wait for the beep.

Step 15: Wait for .5 seconds after the beep and say "Calculator"

Step 16: Repeat this pass twice.

Step 17: Tap on Record App Events button.

Step 18: Make sure Calculator runs.

Step 19: Now press the Home button to exit Calculator.

Step 20: You will now be at the main screen of VoiceNavIt.

Step 21: Tap on Play to test the recorded voice command macro. Please note: You do not need to say anything. It's just a test.

Step 22: Now you can test the voice command name.

Step 23: Press the trigger button - Volume Up (Treo™) or Picture (LifeDrive™) button.

Step 24: Wait for the woman's voice.

Step 25: Wait for the beep.

Step 26: Wait .5 seconds after the beep and say "Calculator".

Step 27: You will now see VoiceNavIt run the record macro "Calculator". It will run the Calculator program.

CONGRATULATIONS: You have successfully setup VoiceNavIt™ and created a voice command. Please note: Now that you have QuickStart active you will be able to press the Trigger button at any time to activate listening for issuing of voice command.

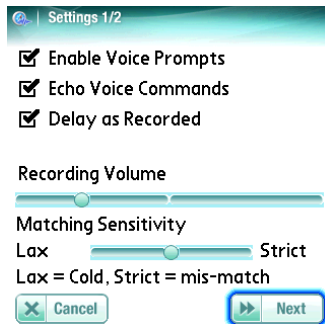
When recording Voice Commands make sure you make them unique and make sure you have two good training passes.

Hints: When recording a Voice Command make sure:

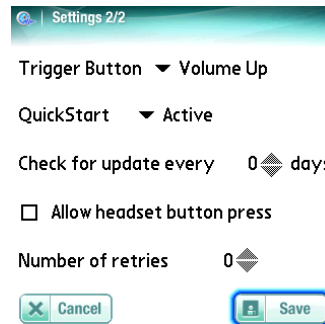
1. There are no LOUD background noises.
2. Speak the Voice Command clearly and naturally.
3. Speak the Voice Command at the same distance from the microphone on training and issuing Voice Commands.

6. Settings

To get to the settings screens tap on the "Settings" button on the main screen of VoiceNavIt™. The following two screens will appear:



Settings 1/2



Settings 2/2

Enable Voice Prompts

To hear voice prompts, check this box. Tap to toggle checkmark.

Echo Voice Commands

To hear what you recorded for a voice command, check this box. Tap to toggle checkmark.

Delay as Recorded

To playback Voice Command in real time check this box. To playback at selected speed uncheck. It will display the follow setting.

Delay as Recorded

Delay in 100th S 0

To playback Voice Command at selected speed uncheck Delay as Recorded and enter in delay time.

Recording Volume



To increase recording volume move slider to the right. To decrease recording volume move slider to the left.

CAUTION: changing the recording volume affects recognition of ALL voice commands! It may be necessary to re-record voice commands after making a change.

Matching Sensitivity

Lax  Strict

Lax = Cold, Strict = mis-match

If you have a cold, and or keep getting “No Match” Voice Commands, move the slider to Lax, then try again. If you have mis-matched Voice Commands move the slider more towards Strict.



If you want to cancel all settings tap here.



To get to the next settings screen tap here.

Trigger Button ▼ Volume Up


To select a Trigger button tap the down arrow to display a list of button choices. VoiceNavIt™ will detect what device you have and display the buttons available for that device.

Note: Be sure to select a Trigger button that is different than the one used for VoiceDialIt™.

QuickStart ▼ Inactive

Active: the Trigger button will launch VoiceNavIt™ at any time

Inactive: the Trigger button only works when VoiceNavIt™ is already running.

Check for update every  0 days

Choose how often you want to check for updates.

Recommendation: keep at zero, 90, or 120

Allow headset button press

If checked, your wired headset can be used to issue and record voice commands. Pressing the headset button will activate VoiceNavIt™.

Number of retries  0

We recommend settings the number of retries on no match voice commands to 1.



Tap the Cancel button to discard changed settings and return to the main screen.



Tap the Save button to save current settings.

Note: If you do not tap on the Save button, changed settings are not saved.

7. VoiceNavIt™ limitations

- Does not work well with loud background noise present.
- Supports 2.5 seconds of recording for a Voice Command.
- Wireless (Bluetooth) headsets and devices are not supported.

8. User License

This is an agreement between you, the end user, and VoiceIt Technologies, LLC.. ("VoiceIt"). By using this software, you are agreeing to become bound by the terms of this agreement.

IF YOU DO NOT AGREE TO THE TERMS OF THIS AGREEMENT, DO NOT USE THIS SOFTWARE. PROMPTLY REMOVE IT FROM YOUR COMPUTER.

1. GRANT OF LICENSE. VoiceIt, as Licensor, grants to you, the Licensee, a non-exclusive right to use this software program (hereinafter the "Software") in accordance with the terms contained in this license. You may use the Software on a single computer.
2. OWNERSHIP OF SOFTWARE. VoiceIt retains the copyright, title and ownership of the SOFTWARE and the written materials regardless of the form or media in or on which the original and other copies may exist. You may make one (1) copy of the SOFTWARE solely for backup purposes. You must reproduce and include the copyright notice on the backup copy.
3. TRANSFERS. You may physically transfer the SOFTWARE from one of your computers to another provided that the SOFTWARE is used on only one computer at a time.
4. TERM. This License is effective on the date you purchased the SOFTWARE. VoiceIt reserves the right to terminate this license at any time and any such termination shall be effective immediately without notice. Upon termination you shall destroy the written materials and all copies of the SOFTWARE, including modified copies, if any.
5. US GOVERNMENT RESTRICTED RIGHTS. The SOFTWARE and any accompanying materials are provided with Restricted Rights. Use, duplication or disclosure by the Government is subject to restrictions as set forth in subparagraph (c)(1)(ii) of The Rights in Technical Data and Computer Software clause at DFARS 252.227-7013, or subparagraphs (c)(1) and (2) of the Commercial Computer Software - Restricted Rights at 48 CFR 52.227-19, as applicable. Contractor/manufacturer is VoiceIt Technologies, LLC., 3500 Girard Ave. S, Minneapolis, MN 55408..

9. Copyright

Ownership rights and intellectual property rights in and to the Software shall remain in VoiceIt Technologies, LLC. The Software is protected by the copyright laws of United States and international copyright treaties. This License gives you no rights to such content.

VoiceNavIt™, VoiceLib, VoiceLibFilter, and VoiceLibSupport are ©Copyrighted 2004-2006 by VoiceIt Technologies, LLC.

10. Disclaimer

(a)DISCLAIMER OF WARRANTY. The Software is provided on an "AS IS" basis, without warranty of any kind, including without limitation the warranties of merchantability, fitness for a particular purpose and non-infringement.

(b)You and not VoiceIt Technologies, LLC. assume the entire cost of any service and repair. In addition, mechanism implemented by the Software may have inherent procedural limitations, and you must determine that the Software sufficiently meets your requirements.

(c)This disclaimer of warranty constitutes an essential part of the agreement.

11. Limitation of Liability

UNDER NO CIRCUMSTANCES AND UNDER NO LEGAL THEORY, TORT, CONTRACT, OR OTHERWISE, SHALL VOICEIT TECHNOLOGIES, LLC. OR ITS SUPPLIERS OR RESELLERS BE LIABLE TO YOU OR ANY OTHER PERSON FOR ANY INDIRECT, SPECIAL, INCIDENTAL, OR CONSEQUENTIAL DAMAGES OF ANY CHARACTER INCLUDING, WITHOUT LIMITATION DAMAGES FOR LOSS OF GOODWILL, WORK STOPPAGE, COMPUTER FAILURE OR MALFUNCTION, OR ANY AND ALL OTHER COMMERCIAL DAMAGES OR LOSSES.

12. Technical Support

For technical support please send email to support.team@voiceit-tech.com or visit our website at www.voiceit-tech.com

Web based online support: <http://www.voiceit-tech.com/forum/index.php>