



# **VoiceSecureIt™ 2.0.0**

## **Users Manual**

**Copyright ©2004-2006**  
**VoiceIt Technologies, LLC.**  
**All Rights Reserved.**

**[www.voiceit-tech.com](http://www.voiceit-tech.com)**

# Table of Contents

1. Introduction.....	2
2. System Requirement .....	2
2.1. Compatibility .....	2
3. Installation.....	2
4. Enrollment of Voice Print Phrase.....	3
5. Setting a Password.....	4
6. Entering Owner Information.....	5
7. Settings .....	5
8. Registering VoiceSecureIt™ after Purchase.....	8
8.1 Resolving Registration Problems .....	10
9. Launching VoiceSecureIt™ .....	11
10. User Interface .....	11
11. VoiceSecureIt™ limitations .....	12
12. User License.....	12
13. Copyright .....	13
14. Disclaimer .....	13
15. Limitation of Liability.....	13
16. Technical Support.....	13

## 1. Introduction

VoiceSecureIt™ is the first Voice Biometric solution for the PalmOS® Platform. This easy to use and highly effective voice security application enables the user to secure their device with a simple and unique voice print phrase. This new version features a redesigned Graphic User Interface for easier viewing and robust functionality.

VoiceSecureIt 2.0 provides the utmost in securing and protecting your valuable - personal and corporate - data with the ONLY PalmOS® application using authentication with your unique voice print phrase. VoiceSecureIt is ideal for enterprise, government and medical applications; bulk pricing and licensing is available..

## 2. System Requirement

- PalmOS® device with 5.2 Extended Sound Support (voice recording) compatibility.
- 1800K of free memory.

### 2.1. Compatibility

Will work with all PalmOS™ Powered devices running PalmOS™ 5.2 with audio recording support. Some of the currently supported models are: Palm Treo™ 700p, Treo™ 650, Treo™ 600 smartphones, PalmOne LifeDrive, and Palm T|X (with special adapter).

## 3. Installation

To install VoiceSecureIt™ you will need to run the saved file called "VoiceSecureIt20forPalmOS.exe." on you PC. Then please follow screen instructions.

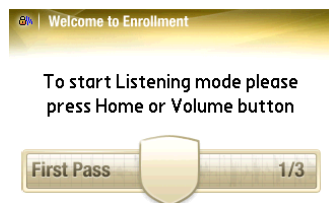
## 4. Enrollment of Voice Print Phrase

To utilize VoiceSecureIt you must enroll your Voice Print Phrase. This is the phrase you will speak to access your device. Immediately after installation, you will see the following Enrollment Screens:

In this first screen for enrollment, press/tap the Home button/icon, wait for the voice over, and beep, then say your Voice Print Phrase. For example: **"My name is John Smith Let me in"**. **Please note: The longer the better for security, also make sure you don't just say numbers. i.e. "1234567890"**.

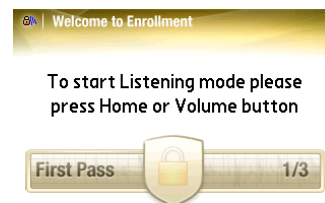
Hints: When recording a Voice Print Phase make sure:

1. There are no LOUD background noises.
2. Speak the Voice Print Phrase clearly and naturally.
3. Speak the Voice Print Phrase at the same distance from the microphone.
4. (LifeDrive) wait 2-3 seconds before speaking to give the disk drive time to start



Abort

First Pass – before recording



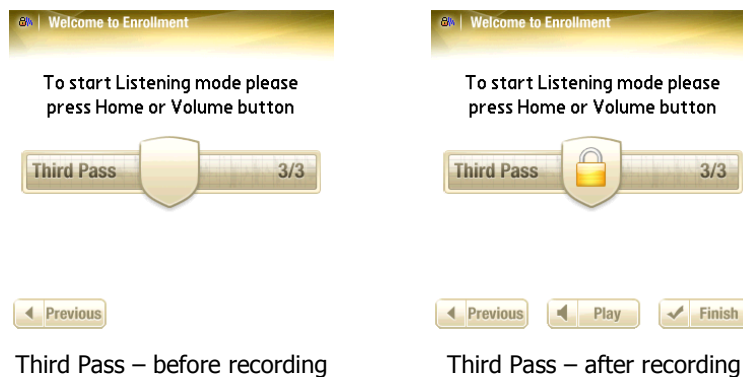
Abort Play Next

First Pass – after recording

After you have said your Voice Print Phrase, tap the "Next" button to proceed to the Second Pass screen. Repeat the process of pressing/tapping the Home/Volume button, waiting for the voice over and beep, then saying your Voice Print Phrase, and finally tapping the "Next" button.



On the third screen, repeat the process of pressing/tapping the Home/Volume button, waiting for the voice over and beep, then saying your Voice Print Phrase.



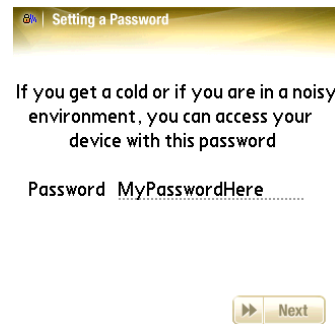
Finally tap on the "Finish" button. Voice Phrase Enrollment is complete!

## 5. Setting a Password

Now enter a password. The password provides an alternate method of accessing the device. Use the stylus to enter a password by typing on the keyboard on the screen. Tap on "OK" when done. The password will be displayed as in the screen on the right. **It is critical that you remember the password exactly as displayed!** Otherwise you will not be able to access the device if your Voice Print Phrase is forgotten or not recognized. Tap on "Next".



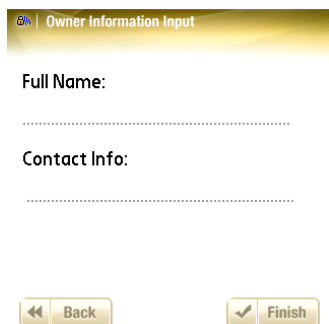
Use keyboard on screen



Password complete

## 6. Entering Owner Information

Enter Owner Information as depicted in the screens below. Information must be entered into each field. Tap on "Finish" when done.



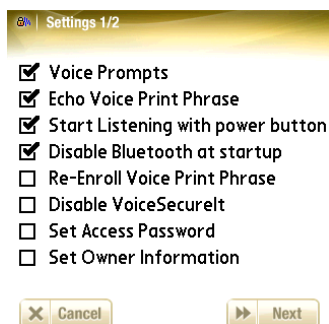
Owner Info – before



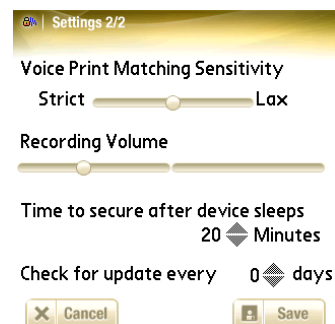
Owner Info - after

## 7. Settings

You can now review the Settings and make any changes. The Settings are displayed in two screens. Tap on "Next" to move to the Settings 2/2 screen. Tap "Save" to preserve your changes. The individual settings are reviewed below.



Settings 1/2



Settings 2/2

**Voice Prompts**

To hear the voice prompts during authentication check here. To disable voice prompts uncheck this box (you will still hear a beep signaling when to speak).

 **Echo Voice Print Phrase**

To play back your spoken Voice Print Phrase during authentication, check here.

 **Start Listening with power button**

To have VoiceSecureIt prompt you for authentication when the power button is pressed, check here.

 **Disable Bluetooth at startup**

To disable Bluetooth at startup, check here.

 **Re-Enroll Voice Print Phrase**

To re-enroll your Voice Print Phrase, check here.

 **Disable VoiceSecureIt**

To temporarily disable VoiceSecureIt, check here.

 **Set Access Password**

To change your access password, check here.

 **Set Owner Information**

To change your displayed Owner Information, check here.



Tap on "Next" to display the second Settings screen.

**Voice Print Matching Sensitivity**

Strict  Lax


If you have a cold and your Voice Print Phrase cannot be authenticated, move the slider to Lax, then try again. If you want the highest security setting possible, and have no issues with authentication, move towards Strict.

**Recording Volume**

If the Voice Print Phrase recording is too quiet move the slider to the right. If the recording is too loud or has a lot of static, move the slider to the left.

**Time to secure after device sleeps**0  **Minutes**

To secure the device upon entering sleep mode, set to 0 minutes. To delay securing the device after entering sleep mode, choose a number between 1 and 99 minutes. This means VoiceSecureIt will wait the desired number of minutes after the device enters sleep mode before securing the device. Great for Treo™ Smartphones when making many calls in a short time period.

**Check for update every** 0  **days**

Choose how often you want to check for updates.

Recommendation: keep at zero.

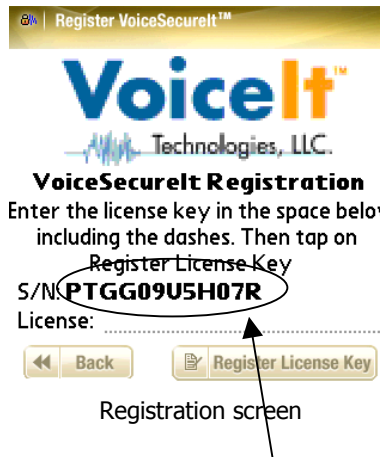
Tap the Cancel button to discard changed settings and return to the main screen.



Always tap on "Save" to preserve your changes.

## 8. Registering VoiceSecureIt™ after Purchase

After installation is complete, launch VoiceSecureIt by tapping on the VoiceSecureIt icon. Tap on the "Register" button. You will see the following screen.

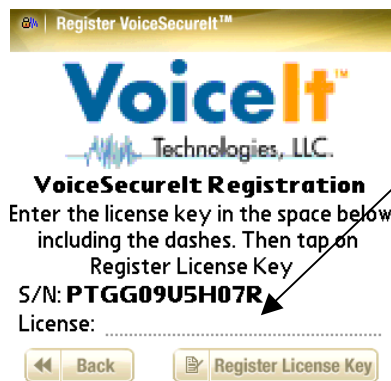


The serial number of your device is required for registration. In the example above, the serial number is circled. Carefully copy the **Serial Number (S/N)** from YOUR own screen. Note: there are no letter "O" characters in the serial number, only zeros. So in the example above, the 5<sup>th</sup> and 10<sup>th</sup> characters are both zeros. Now complete the following steps to register and create a License Key online.

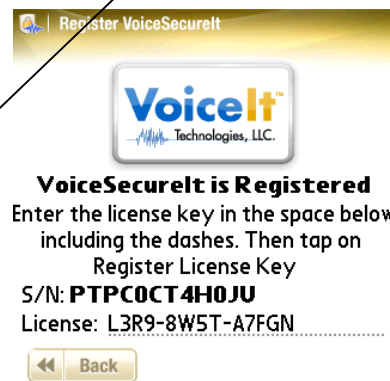
- Login at: <https://www.voiceit-tech.com/login.php>
- Use the password you received via email after purchasing to login.
- For best results, copy and paste the password into the login screen. Note: if your password contains lower-case letters login via computer as your phone cannot generate lower-case letters. You may change the password after logging in.
- After logging in choose the "Generate License" option.
- Carefully enter your serial number in the space provided near the bottom of the form.
- Choose "VoiceSecureIt" from the Application list.
- Click on the "Send License Key" button to complete registration. Your License Key will be displayed on screen. It will also be emailed to you.

## 8. Registering VoiceSecureIt™ after Purchase – Continued

After you receive your License Key, access the Registration screen again. Tap on the VoiceSecureIt icon, then tap on the "Register" button. Now carefully enter the License Key into the space after "License". Be sure to include the dashes when typing. Tap on the **Register License Key** button to complete the registration process. Following acceptance of the registration key, the screen will change to indicate that VoiceSecureIt is registered. You will only have to do this once unless you replace your phone or perform a hard reset.

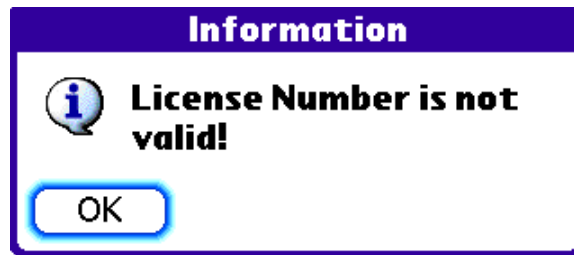


Entering the license key



Successful registration

## 8.1 Resolving Registration Problems



If the message above is displayed during registration, please try the suggestions below:

- Carefully re-enter the License Key, and be sure to include the dashes.
- Confirm that the serial number was copied correctly. Launch VoiceSecureIt and tap on the "Register" button to display the Registration screen. Carefully compare the serial number on the screen with the serial number on your License Key email. Make sure each character is correct, in the proper order and that you have the right number of characters. If you notice any differences, please create a new license key as described in section 3.1. Be sure to enter the correct serial number in the space provided near the bottom of the form.
- If you have purchased other VoiceIt products or have an older version of VoiceSecureIt check your License Key email to ensure that the Key was created for the appropriate product and version. If the Product is NOT VoiceSecureIt 2.0.0 then create a new License Key as described in section 9. Be sure to choose the correct product/version from the Application list.
- If you cannot resolve the problem, contact our support team at: [support.team@voiceit-tech.com](mailto:support.team@voiceit-tech.com) and report the problem. Include in your email:
  - Product and Version Number
  - The correct serial number
  - Any invalid License Key(s) you generated

## 9. Launching VoiceSecureIt™

To launch VoiceSecureIt, look for the icon



on the device. Then tap on it to secure your device.

Note: When your device goes into sleep mode, VoiceSecureIt will automatically activate and protect your important data. Only you will be able to access the device by saying your Voice Print Phrase.

## 10. User Interface

The main screen of VoiceSecureIt is displayed when you run VoiceSecureIt or whenever you wake up your device from sleep mode. This is where you say the Voice Print Phrase to gain access to your device. Your spoken phrase is authenticated against the Voice Print Phrase that you recorded during enrollment. Note: be sure to say exactly the same Voice Print Phrase as recorded during enrollment, otherwise you will not be able to access your device. Also, if you have a cold or forget your Voice Print Phrase use the alternate method of entering a password. The password is setup on first run of VoiceSecureIt.

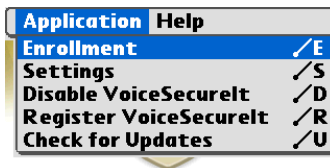


To start Listening mode please  
press Home or Volume button



Main screen

The main menu options allow you to re-enroll your Voice Print Phrase, change settings, or even temporarily disable VoiceSecureIt.



To start Listening mode please  
press Home or Volume button



## 11. VoiceSecureIt™ limitations

- Does not work well with loud background noise present.
- Only supports 3.5 seconds of recording a Voice Print Phrase.

## 12. User License

This is an agreement between you, the end user, and VoiceIt Technologies, LLC.. ("VoiceIt"). By using this software, you are agreeing to become bound by the terms of this agreement.

IF YOU DO NOT AGREE TO THE TERMS OF THIS AGREEMENT, DO NOT USE THIS SOFTWARE. PROMPTLY REMOVE IT FROM YOUR COMPUTER.

1. GRANT OF LICENSE. VoiceIt, as Licensor, grants to you, the Licensee, a non-exclusive right to use this software program (hereinafter the "Software") in accordance with the terms contained in this license. You may use the Software on a single computer.
2. OWNERSHIP OF SOFTWARE. VoiceIt retains the copyright, title and ownership of the SOFTWARE and the written materials regardless of the form or media in or on which the original and other copies may exist. You may make one (1) copy of the SOFTWARE solely for backup purposes. You must reproduce and include the copyright notice on the backup copy.
3. TRANSFERS. You may physically transfer the SOFTWARE from one of your computers to another provided that the SOFTWARE is used on only one computer at a time.
4. TERM. This License is effective on the date you purchased the SOFTWARE. VoiceIt reserves the right to terminate this license at any time and any such termination shall be effective immediately without notice. Upon termination you shall destroy the written materials and all copies of the SOFTWARE, including modified copies, if any.
5. US GOVERNMENT RESTRICTED RIGHTS. The SOFTWARE and any accompanying materials are provided with Restricted Rights. Use, duplication or disclosure by the Government is subject to restrictions as set forth in subparagraph (c)(1)(ii) of The Rights in Technical Data and Computer Software clause at DFARS 252.227-7013, or subparagraphs (c)(1) and (2) of the Commercial Computer Software - Restricted Rights at 48 CFR 52.227-19, as applicable. Contractor/manufacturer is VoiceIt Technologies, LLC., 3500 Girard Ave. S, Minneapolis, MN 55408.

### 13. Copyright

Ownership rights and intellectual property rights in and to the Software shall remain in VoiceIt Technologies, LLC. The Software is protected by the copyright laws of United States and international copyright treaties. This License gives you no rights to such content.

VoiceSecureIt, BioVoiceLib, BioVoiceLibFilter, and BioVoiceLibSupport are ©Copyrighted 2004-2006 by VoiceIt Technologies, LLC.

### 14. Disclaimer

(a)DISCLAIMER OF WARRANTY. The Software is provided on an "AS IS" basis, without warranty of any kind, including without limitation the warranties of merchantability, fitness for a particular purpose and non-infringement.

(b)You and not VoiceIt Technologies, LLC. assume the entire cost of any service and repair. In addition, mechanism implemented by the Software may have inherent procedural limitations, and you must determine that the Software sufficiently meets your requirements.

(c)This disclaimer of warranty constitutes an essential part of the agreement.

### 15. Limitation of Liability

UNDER NO CIRCUMSTANCES AND UNDER NO LEGAL THEORY, TORT, CONTRACT, OR OTHERWISE, SHALL VOICEIT TECHNOLOGIES, LLC. OR ITS SUPPLIERS OR RESELLERS BE LIABLE TO YOU OR ANY OTHER PERSON FOR ANY INDIRECT, SPECIAL, INCIDENTAL, OR CONSEQUENTIAL DAMAGES OF ANY CHARACTER INCLUDING, WITHOUT LIMITATION DAMAGES FOR LOSS OF GOODWILL, WORK STOPPAGE, COMPUTER FAILURE OR MALFUNCTION, OR ANY AND ALL OTHER COMMERCIAL DAMAGES OR LOSSES.

### 16. Technical Support

For technical support please send email to [support.team@voiceit-tech.com](mailto:support.team@voiceit-tech.com) or visit our website at [www.voiceit-tech.com](http://www.voiceit-tech.com)

Web based online support: <http://www.voiceit-tech.com/forum/index.php>